



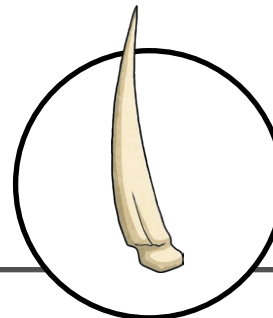
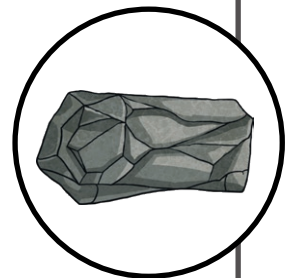
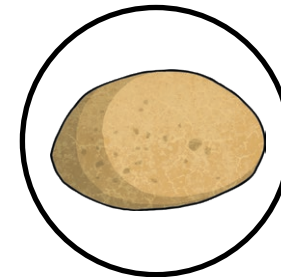
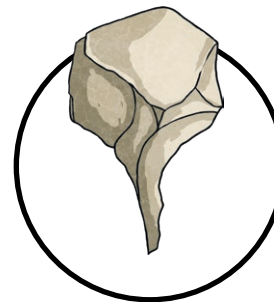
Explaining Excavations A

I can describe what the fossils found by Mary Leakey tell us about human evolution.



J										
I										
H										
G										
F										
E										
D										
C										
B										
A										
	1	2	3	4	5	6	7	8	9	10

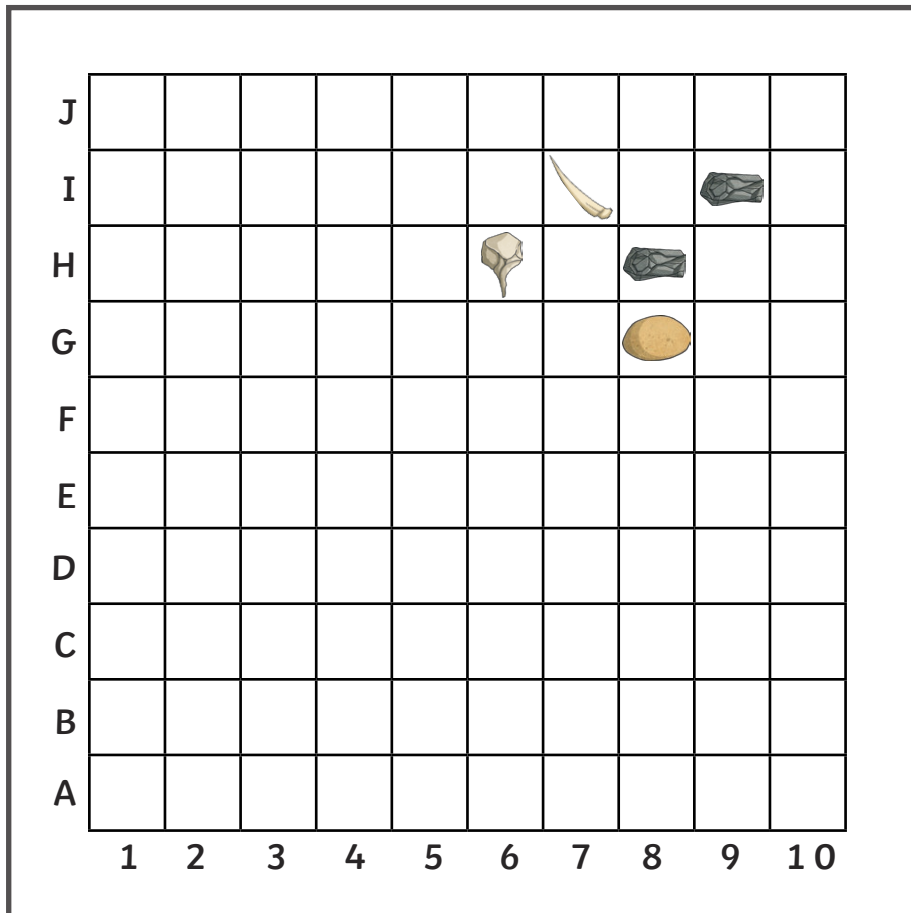
Can you find a set of stone tools like the ones Mary Leakey found at Olduvai Gorge?



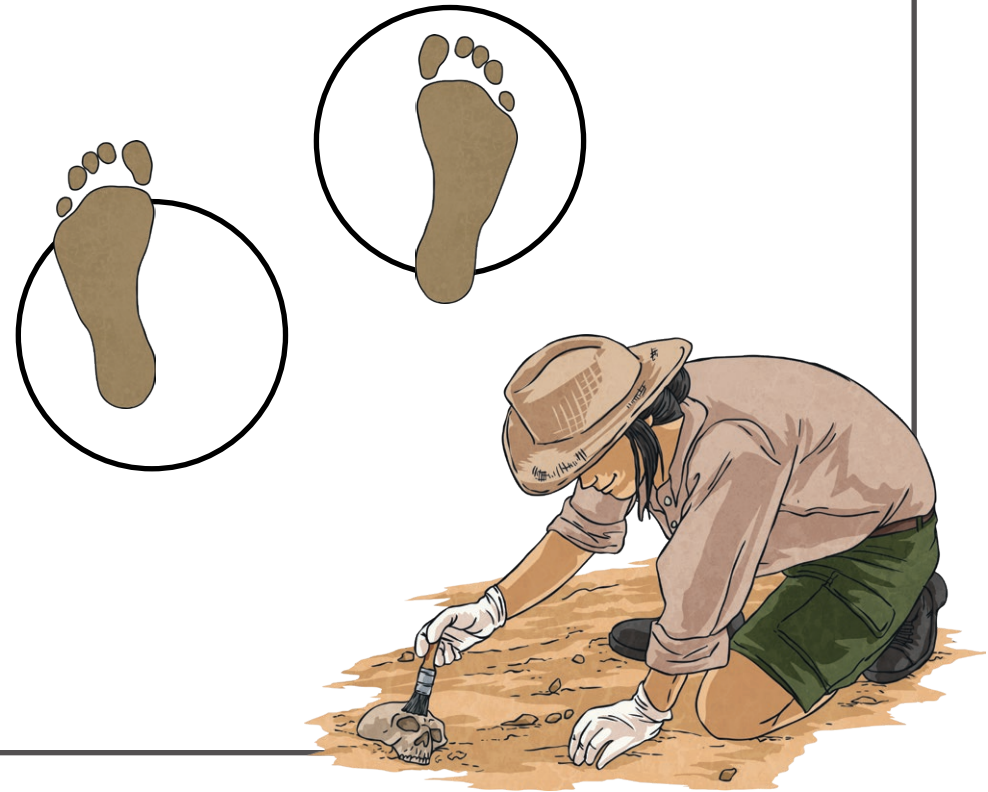


Explaining Excavations B

I can describe what the fossils found by Mary Leakey tell us about human evolution.



Can you find a set of footprints like the ones Mary Leakey found at Laetoli?





Explaining Excavations

To understand the life of Mary Leakey and her work about fossils.



Mary Leakey found fossilised footprints and tools at her excavation sites in Africa. Can you explain the importance of her finds?

Laetoli Footprints

The footprints are important because they show that this hominin (early _____) walked upright on _____ legs. This proves that this species was different from _____.

Stone Tools at Olduvai Gorge

The stone tools are important because they show that this _____ had developed greater _____ skills. They were found in one area, which suggests that this species was becoming more _____, and more like modern humans.

Use these words to complete the explanations.

hominin

human

social

thinking

apes

two



Explaining Excavations **Answers**

Mary Leakey found fossilised footprints and tools at her excavation sites in Africa. Can you explain the importance of her finds?

Laetoli Footprints

The footprints are important because they show that this hominin (early *human*) walked upright on *two* legs. This proves that this species was different from *apes*.

Stone Tools at Olduvai Gorge

The stone tools are important because they show that this *hominin* had developed greater *thinking* skills. They were found in one area, which suggests that this species was becoming more *social*, and more like modern humans.

Use these words to complete the explanations.

hominin

human

social

thinking

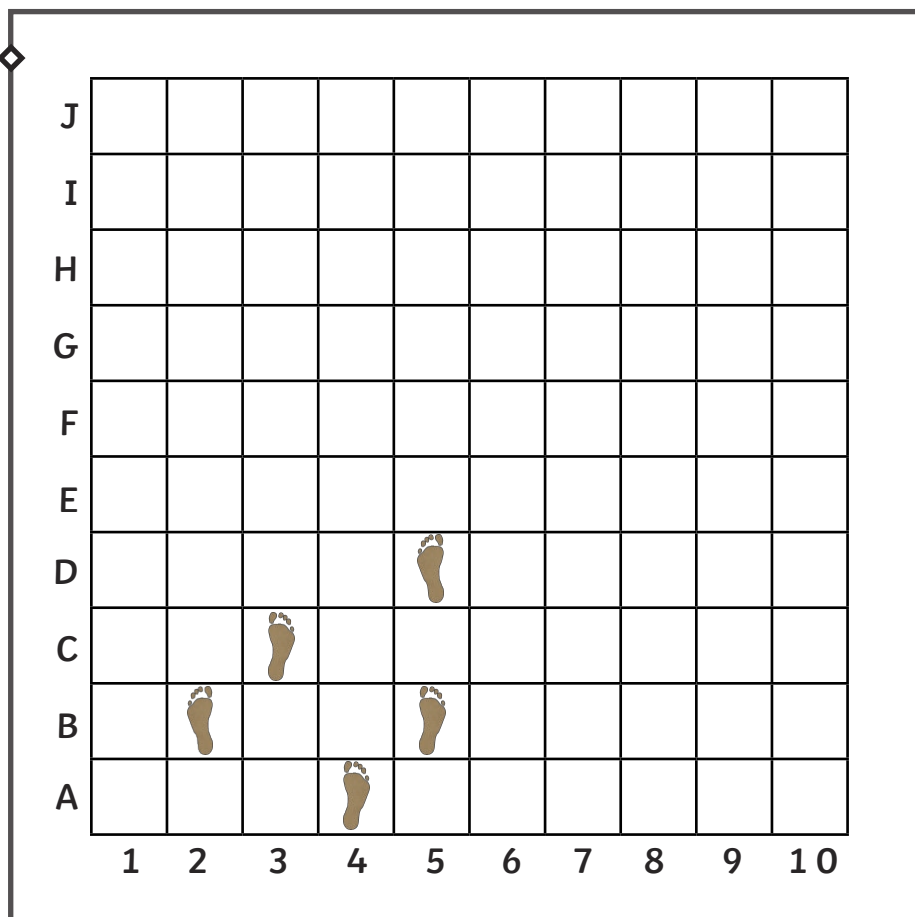
apes

two

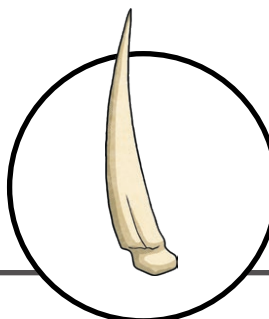
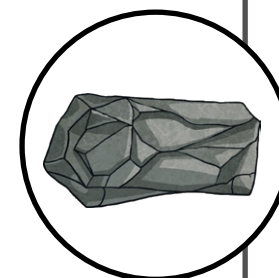
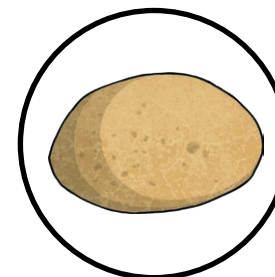
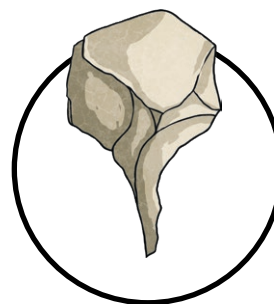


Explaining Excavations A

I can describe what the fossils found by Mary Leakey tell us about human evolution.



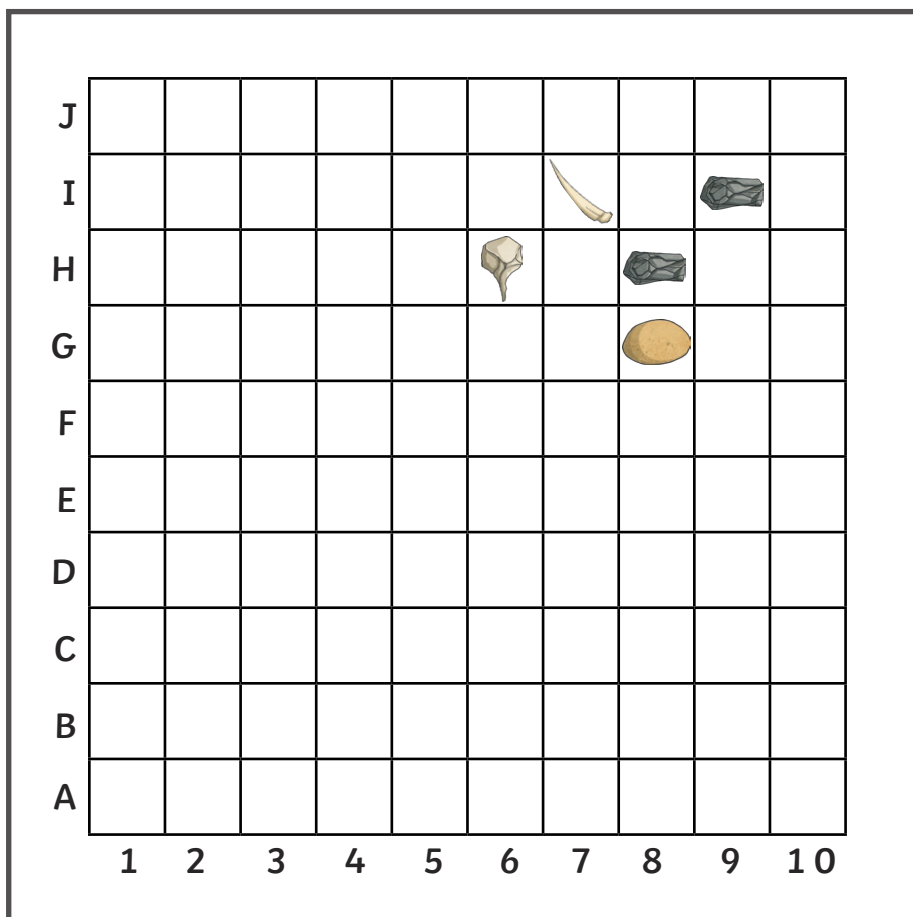
Can you find a set of stone tools like the ones Mary Leakey found at Olduvai Gorge?



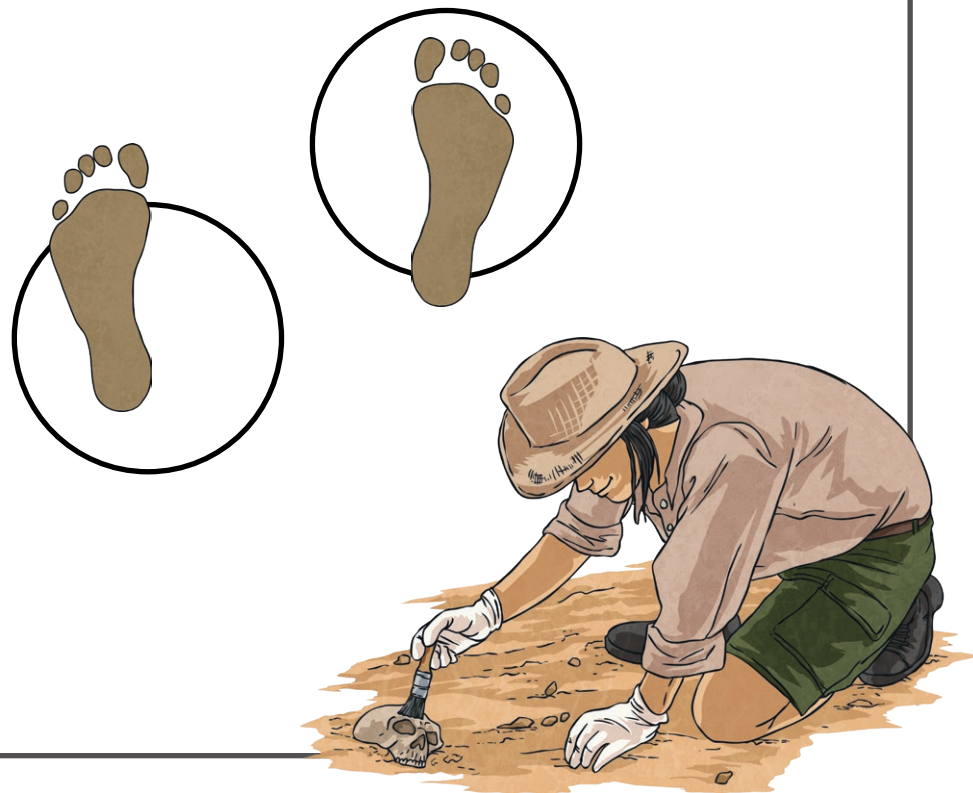


Explaining Excavations B

I can describe what the fossils found by Mary Leakey tell us about human evolution.



Can you find a set of footprints like the ones Mary Leakey found at Laetoli?





Explaining Excavations

To understand the life of Mary Leakey and her work about fossils.



Mary Leakey found fossilised footprints and tools at her excavation sites in Africa. Can you explain the importance of her finds? Refer to human evolution in your explanations.

Laetoli Footprints

The footprints are important because _____

Stone Tools at Olduvai Gorge

The stone tools are important because _____

You may want to use these words in your explanations.

hominin

ape

bipedal

upright

central

social

thinking

communal

human

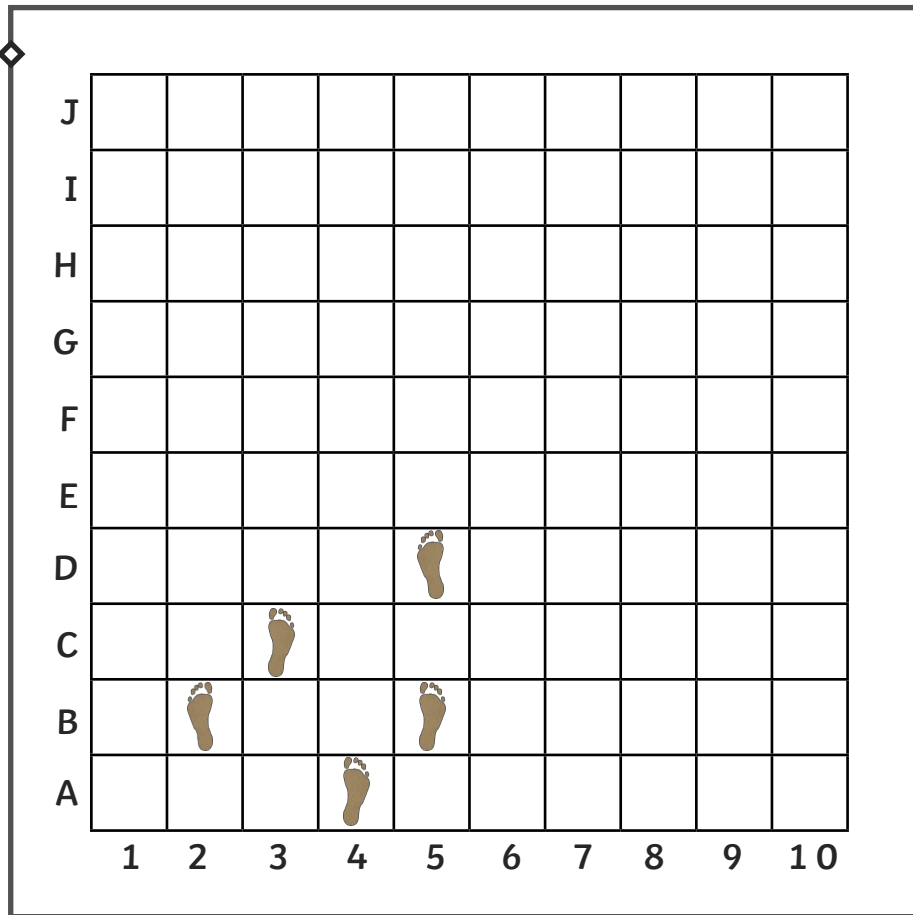
species

Homo habilis

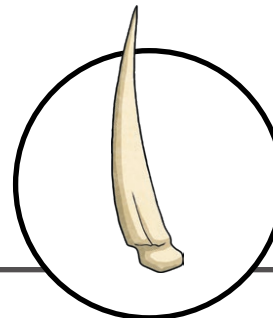
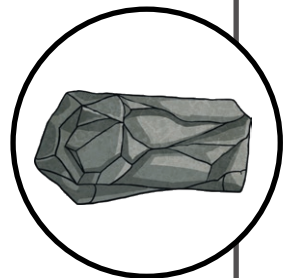
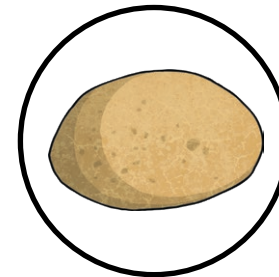
Australopithecus afarensis

Explaining Excavations A

I can describe what the fossils found by Mary Leakey tell us about human evolution.

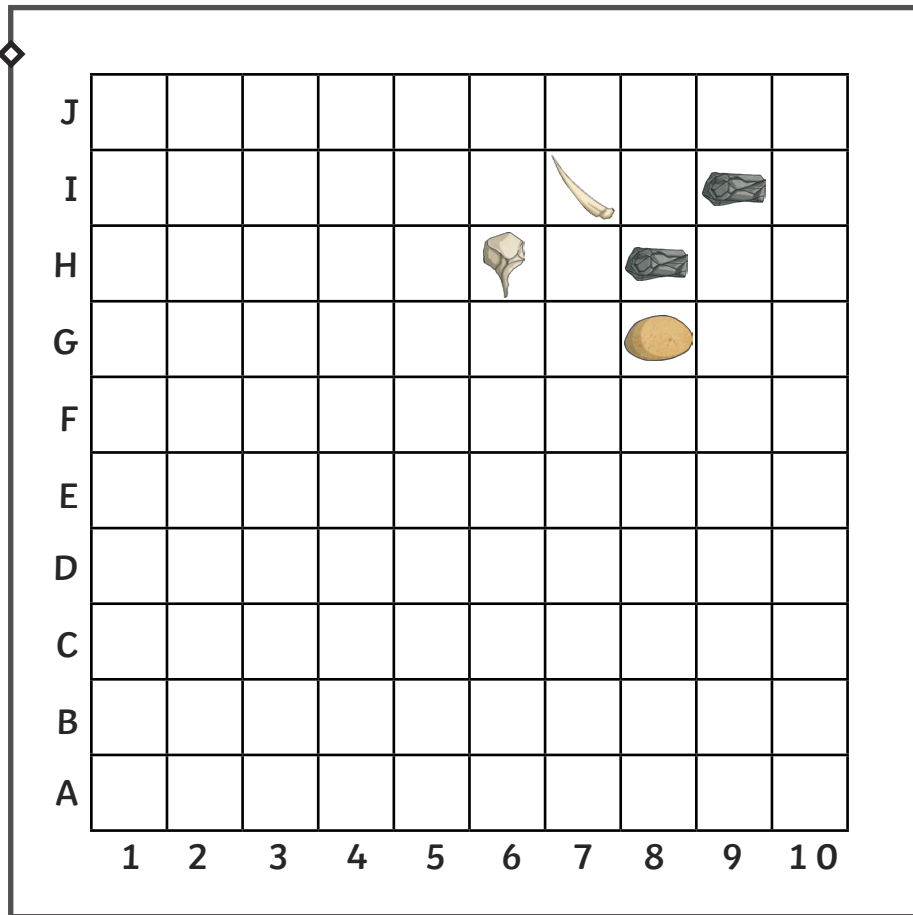


Can you find a set of stone tools like the ones Mary Leakey found at Olduvai Gorge?

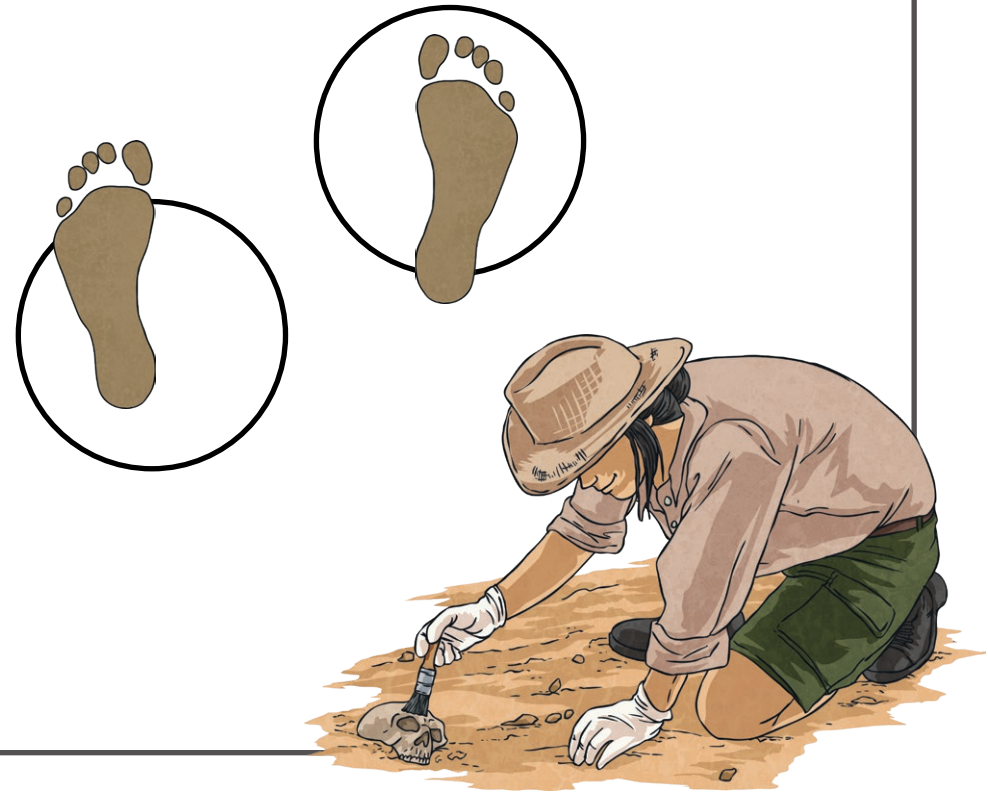


Explaining Excavations B

I can describe what the fossils found by Mary Leakey tell us about human evolution.



Can you find a set of footprints like the ones Mary Leakey found at Laetoli?





Explaining Excavations

To understand the life of Mary Leakey and her work about fossils.



Mary Leakey found fossilised footprints and tools at her excavation sites in Africa. Can you explain the importance of her finds? Refer to human evolution in your explanations.

Laetoli Footprints

Stone Tools at Olduvai Gorge
